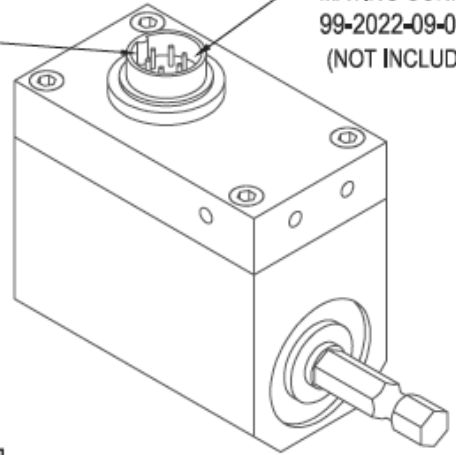


FUTEK MODEL TRH300

HEX DRIVE ROTARY TORQUE SENSOR

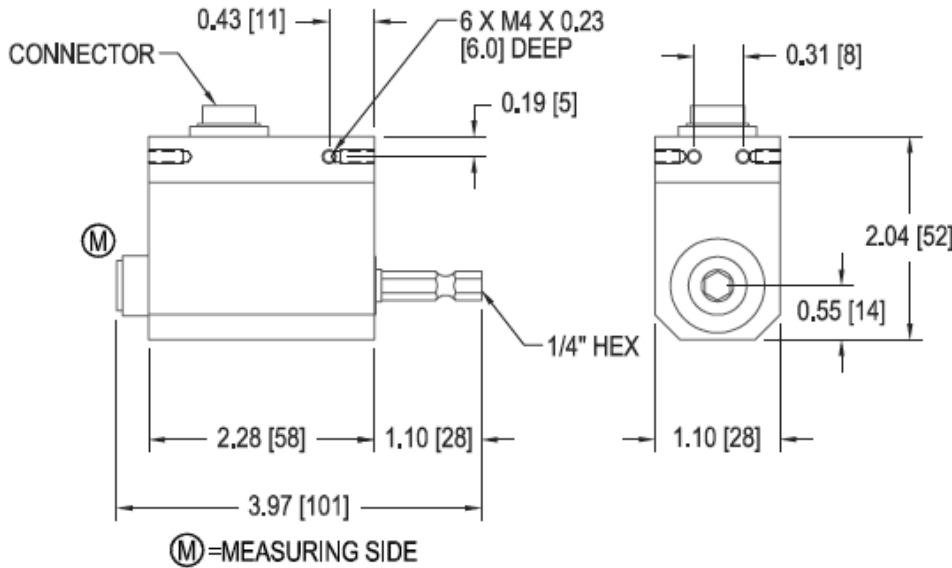
CE COMPLIANT

BINDER RECEPTACLE
09-0323-99-06
MATING CONNECTOR
99-2022-09-06
(NOT INCLUDED)



+OUTPUT
(CW)

Drawing Number: FI1024-A			
INCH [mm] R.O.= Rated Output			
CONNECTOR CODE (CABLE PACKAGE WIRING CODE)			
-Excitation	+Excitation	Shield	+Signal
PIN '1' (BLACK)	PIN '2' (RED)	PIN '3' (FLOATING)	PIN '4' (GREEN)
-Signal	Shunt Cal		
PIN '5' (WHITE)	PIN '6' (ORANGE)		



STOCK #	Capacity		MAX AXIAL LOAD	
	in-lb	N m	lb	(N)
FSH01979	18	2	4.5	20
FSH01980	53	6	11	50
FSH01981	106	12	11	50
FSH01982	177	20	34	150

SPECIFICATIONS:

RATED OUTPUT	1 mV/V nom (2 Nm); 2 mV/V nom (6-20 Nm)
SAFE OVERLOAD	150% of R.O.
ZERO BALANCE	±1% of R.O.
EXCITATION (VDC OR VAC)	5 to 11
BRIDGE RESISTANCE	350 Ω nom.
NONLINEARITY	±0.2% of R.O.
HYSTERESIS	±0.1% of R.O.
NONREPEATABILITY	±0.2% R.O.
TEMP. SHIFT ZERO	±0.01% of R.O. / °F [±0.02% of R.O. / °C]
TEMP. SHIFT SPAN	±0.01% of R.O. / °F [±0.02% of Load / °C]
OPERATING TEMP.	41 to 122°F [+5 to +50°C]
ROTATIONAL SPEED	3000 RPM MAX
CONNECTOR:	6 pin Binder Series #581 (09-0323-99-06)
ACCESSORIES AND RELATED INSTRUMENTS AVAILABLE	
CALIBRATION (STD)	Certificate of Conformance
CALIBRATION (AVAILABLE)	5pt CW and CCW
SHUNT CAL VALUE (INTERNAL)	87K ohm (2 Nm), 43K ohm (6-20 Nm)
SHUNT CALIBRATION	With sensor fully connected jump Pins 1 & 6 to generate 2 mV/V nom output.
CALIBRATION TEST EXCITATION	10VDC

系泰機電有限公司

Tel : (04)2706-9659
Fax: (04)2452-0110

www.accusystech.com
E-mail: sales@accusystech.com