

FUTEK MODEL TRS600

NON CONTACT SHAFT TO SHAFT ROTARY TORQUE SENSOR

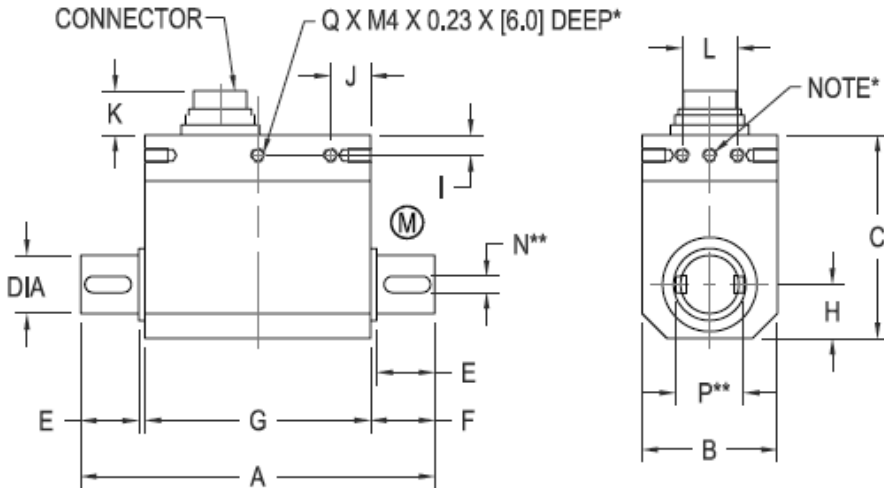
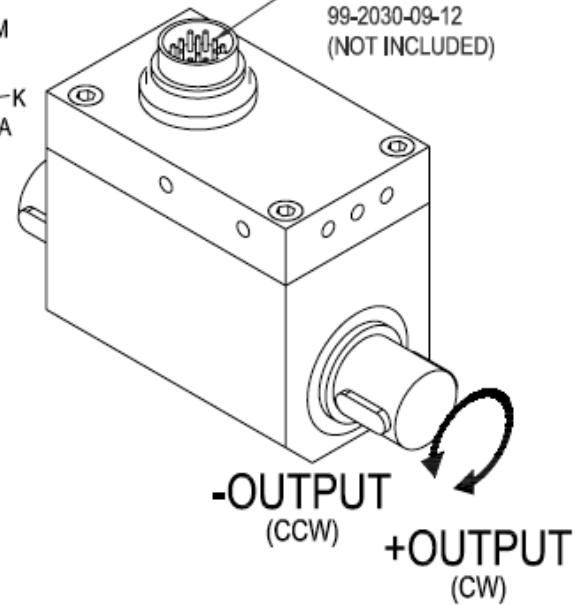
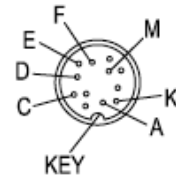
Drawing Number: FI1028-E

CE COMPLIANT

INCH [mm] | R.O.= Rated Output

CONNECTOR CODE (CABLE PACKAGE WIRING CODE)			
Power	Ground	Signal	Return (Signal)
PIN 'F' (RED)	PIN 'E' (BLACK)	PIN 'C' (GREEN)	PIN 'D' (WHITE)
Shield	Shunt Cal	Shunt Cal (Gnd)	
PIN 'M' (Floating)	PIN 'K' (PURPLE)	PIN 'A' (YELLOW)	

BINDER RECEPTACLE
09-0331-90-12
MATING CONNECTOR
99-2030-09-12
(NOT INCLUDED)

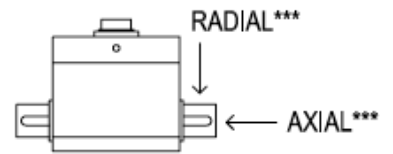


(M) = MEASURING SIDE

* ANTI-ROTATION HOLES, NOT TO BE USED TO SUPPORT LOAD.
SINGLE M4 HOLE USED ON 20 - 100 Nm SENSORS

** FEATHER KEYWAYS PER DIN 6885, KEYWAYS COME PRE-INSTALLED.

*** MAXIMUM LOAD ALLOWED, NOT FOR MEASUREMENT.



STOCK #	CAPACITY		DIA	A	B	C	E	F	G	H	I	J	K	L	N*	P*	Q	MAX AXIAL FORCE***		MAX RADIAL FORCE***		ROTATIONAL SPEED (MAX)	WEIGHT
	in-lb	N m																lb	(N)	lb	(N)		
FSH01994	9	1	0.394 [10] g6	3.62 [92]	1.10 [28]	2.04 [52]	0.63 [16]	0.67 [17]	2.28 [58]	0.55 [14]	0.19 [5]	0.43 [11]	0.59 [15]	0.31 [8]	-	-	6	4.5	20	1	5	12000 RPM	0.6 lb 0.28 kg
FSH01995	18	2																11	50	1	5		
FSH01996	44	5																11	50	2	10		
FSH01997	89	10	0.748 [19] g6	4.25 [108]	1.49 [38]	2.28 [58]	1.18 [30]	1.26 [32]	1.73 [44]	0.75 [19]	0.19 [5]	0.86 [22]	-	0.236 [6]	0.236 [24]	3	34	150	4.5	20	9000 RPM	1.1 lb 0.50 kg	
FSH01998	177	20															34	150	7	30			
FSH01999	443	50															45	200	11	50			
FSH02730	885	100																					

SPECIFICATIONS:

RATED OUTPUT	±5VDC
SAFE OVERLOAD	150% of R.O.
ZERO BALANCE	±1% of R.O.
EXCITATION	11-26 VDC, 1 Watt
NONLINEARITY	±0.2% of R.O.
HYSTERESIS	±0.1% of R.O.
NONREPEATABILITY	±0.2% R.O.
TEMP. SHIFT ZERO	±0.01% of R.O. / °F [±0.02% of R.O. / °C]
TEMP. SHIFT SPAN	±0.01% of Load / °F [±0.02% of Load / °C]
OPERATING TEMP.	-13 to 176°F [-25 to +80°C]
COMPENSATED TEMP.	41 to 122°F [+5 to +50°C]

WEIGHT	1 lb [0.5 kg]
CONNECTOR:	12 pin Binder Series #581 (09-0331-90-12)
ACCESSORIES AND RELATED INSTRUMENTS AVAILABLE	
CALIBRATION (STD)	Certificate of Conformance
CALIBRATION (AVAILABLE)	5pt CW and CCW
CALIBRATION TEST EXCITATION	12 VDC
SHUNT CALIBRATION	With sensor fully connected apply 11-26 VDC to Pins A & K to generate 5VDC nom output.

系泰機電有限公司

Tel : (04)2706-9659
Fax: (04)2452-0110

www.accusystem.com

E-mail: sales@accusystem.com